



In this newsletter:

- ✓ [Where to meet ABS in the coming months](#)
- ✓ [ABS Fresh: "One hour in the flower business equals 1 week in any other business"](#)
- ✓ [ABS Seed: new features](#)
- ✓ [ABS for variety trials management](#)

Where to meet ABS in the coming months?

- CSTA, Halifax - Canada, July 9-11
- ESA, Talinn - Estonia, Oct 8-10

If you want us to schedule some time with you on one of these events, please [mail](#) us.

Are you planning to visit Holland in week 39 for the "[Seed meets technology](#)" event in Zwaagdijk? ABS is happy to meet with you in our office in Grootebroek, which is very close, during this week (September 25-29). You can contact us for a demo via [mail](#).

ABS Fresh: "One hour in the flower business equals 1 week in any other business"

Freshly picked roses must surprise our Valentine, put a smile on the faces of our mothers on Mother's day, or simply remind our love ones we care about them. Flowers harvested on the African soil must travel anywhere in the world within days. ABS Fresh strongly responds to this need of versatility and efficiency with knowledge of the business, agricultural insights and ICT expertise. Simple ICT solutions are implemented with major supply chain advantages as a result.

[UHURU flowers LTD](#) from Kenya provides the world of high end roses that are never in stock for more than 3 days. For this organization time advantage is a key factor for good business. In 2016 UHURU assigned ABS Fresh as partner in implementing a supply chain management system that starts at the planting of the seeds and ends with the shipment of the roses. During this implementation ABS Fresh successfully carried out a number of simple adjustments in the workflow, with great efficiency gains.

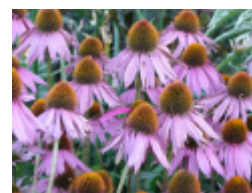
A good example is the registration of freshly picked flowers arriving from the fields to the warehouses. Till recently this registration was done manually. On every bucket or net of fresh flowers a handwritten paper was attached from which traceability information, sometimes difficult to read, was copied in to the archives.

JUNE 2017

Contact & Info

ABS
Het Voert 9
1613 KL Grootebroek
The Netherlands

For more information contact our sales representative, [email](#), [click here to visit our website](#), or call +31(0)228-522809.



 Tell a friend



This error-sensitive procedure also took a few hours before the sales team was informed. Since the launch of the ABS-Fresh barcode scanner in April 2017 the UHURU sales team is real time up to date of new arrivals and the current stock positions. This small step improved the quality of information, increased logistic efficiency and fastened internal and external communications.

The benefits are obvious.

The implementation of the barcode scanner is just a small detail in a much broader ICT solution provided by ABS, with the goal of serving perishable agricultural industry (e.g. flowers, fruits and vegetables).

Please feel free to contact us if you would like to receive more information on the ABS Fresh solution.



ABS Seed: new features

Quicker booking of sales order lines

A new functionality is added to create multiple order lines in a quick way. A default packaging can be selected and multiple varieties can be added to this default packaging:

A range can be set on the unit and with the CTRL F functionality a limit can be created on for example all varieties for which in the full name the text *dip1* exist.

Full name	#	Abbreviated	Crop	Subgroup	Select	Packaging	Number	Quantity Unit	Treatment
Water Melon ALUSA Doped DS	587	ALUSA	480	ZAKO	<input type="checkbox"/>			DS	
Water Melon ALUSA Doped DS	590	ALUSA	480	ZAKO	<input type="checkbox"/>			DS	
Water Melon Falco Doped DS	599	FALCO	480	ZAKO	<input type="checkbox"/>			DS	
Water Melon Falco Doped DS	600	FALCO	480	ZAKO	<input type="checkbox"/>			DS	
Water Melon Neptunus Doped DS	598	NEPTUNUS	480	ZAKO	<input type="checkbox"/>			DS	
Water Melon Neoline Doped DS	621	NEOLINE	480	ZAKO	<input type="checkbox"/>			DS	
Water Melon Neoline Doped DS	672	NEOLINE	480	ZAKO	<input type="checkbox"/>			DS	
Water Melon Ryhan Doped DS	20807	TRIGON	480	ZAKO	<input type="checkbox"/>			DS	
Water Melon Ryhan Doped DS	20808	TRIGON	480	ZAKO	<input type="checkbox"/>			DS	
Water Melon Vertola Doped DS	607	VENTOLA	480	ZAKO	<input type="checkbox"/>			DS	
Water Melon Vertola Doped DS	608	VENTOLA	480	ZAKO	<input type="checkbox"/>			DS	
Water Melon Yashin Doped DS	752	YASHIN	480	ZAKO	<input type="checkbox"/>			DS	

Sales order materials select

From this list is possible to select multiple lines at once. In case the default packaging is filled, all selected lines will get this packaging. The next step is to add the number requested and if needed the treatment. In one click you create all order lines for the selected materials.

Receiving multiple shipments in the same time

It is now possible to receive multiple shipments in one screen.

Receive shipment lines

In the yellow part, the detail information can be entered. After the detail information is entered all batches can be received in one go in the system.

ABS for variety trials management

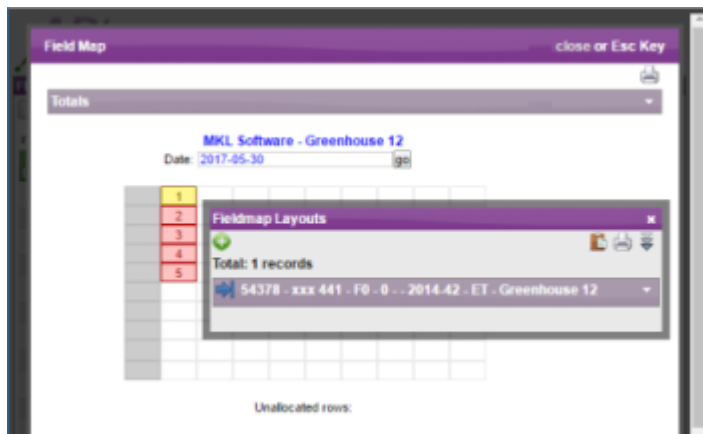
A web based solution to manage variety trials in an organized and traceable way on a database.

Create fields:

In ABS Variety Trials Management one can create multiple trial fields all over the world. These fields can be organized in beds and locations, so plantings can be put in a proper and traceable way. It is also possible to have ABS created these fields in order to create random block designs.

Insert varieties and codes:

Varieties and codes can be inserted in three different ways; by excel transfer, manually in the system directly or by interface with your breeding solution. Species, dates, origin of the material, amount of plants and type of plants are taken into consideration.



Fieldmap layout

Execute tests and evaluations:

Tests can be created in order to execute and register observations on the crops. Different tests for different species and different tests in different stages in the selection process.

Reporting system:

After observations have been recorded, reports and comparisons between tested varieties are showed dynamically. Also data can be printed with light statistics.

Data can also be exported and interfaced with other systems, like with Project R for comprehensive statistics.

Off line observations:

Tests on fields can also be executed off line on a tablet or phone with an app. Without an internet connection, observations can be executed and photos can be taken. At a later stage tests can be synchronized with the database.

Like this ABS offers you a unique, flexible and easy to use system to execute your trials around the globe.

Copyright 2017. Agro Business Solutions B.V. All rights reserved.